



# St. Matthew's Good News

Newbury  
Park

January, 2007

## LOCAL CHURCH

St. Matthew's Completes Congregational Assessment: Goals for 2007 focus on Spiritual Growth and Small Groups.

## ANNUAL CONFERENCE

Bishop Swenson speaks: "Does the Church Have a Future?" The Bishop gives a vision for the church of the new Millennium.

## THE CHURCH IN MISSION

St. Matthew's is a Lead church for the Conejo Job Training Program: helping low income families move out of poverty living.

WWW.NEWBURYPARKCHURCH.COM

## New Assessment Process Means Hope for Better California-Pacific Pastoral Appointments

Jesus said, "Go therefore and make disciples of all the nations, baptizing them in the name of the Father and the Son and the Holy Spirit," <sup>NASB</sup> (Matthew 28:19) This is God's call upon the church. And making disciples for Jesus Christ is exactly the central message of the mission statement of the United Methodist Church.

To respond to that call, over the past two years, the California-Pacific Annual Conference of the United Methodist Church has been introducing new assessment tools for local churches and pastors to assess their current effectiveness in ministry in their local setting. This has introduced a process with an integrated approach to make sure that the pastor appointed at each church is a good fit to deliver on the specific needs of the local church. There are many gifts among pastors and one Spirit. The Bishop's Cabinet wants to make pastoral appointments that work. This program also can assist the denomination in understanding the resources needed to provide support for the local churches to thrive in the communities and mission fields they serve. The process of assessment also helps direct the Staff-Parish Relations Committees at the local churches to better assist the pastor in choosing personal growth initiatives to better prepare them for the ministry needs of the church they currently serve.



The assessment process involves first a Congregational Assessment defining the strengths and weaknesses of the local church, and the direction the people are called to; both as a congregation looking inward and as a church looking to meet community outreach needs. The second step, the Clergy Assessment, defines the specific strengths and weaknesses of the pastor in relation to the ministry setting they currently serve. The idea is that the church wants a pastor that meets the needs of the congregation, and that the pastor's unique set of gifts is matched in the Annual Conference to best serve the mission of the whole Church. We are looking to find the best match of clergy to ministry appointment. Once this match is made then a Covenant for Vital Ministries is drafted to assure that the year is productive and that progress is made for growth in making disciples for Jesus.

For most churches, this will not mean a change of appointment...a new pastor. For the most part, churches have good fits of pastors to congregational needs in our Annual Conference. But on an annual basis the church's context changes, the needs for pastoral leadership change as a church grows. This Congregational Assessment process makes for much more intentionality on the part of the Cabinet in appointment making. "This is better for everyone, and better for God's Kingdom building," said pastor Brad Resare who helped to train congregations in the process in the Long Beach and Santa Barbara districts.

### Inside This Issue:

- The 2007 Church Budget
- Our Church's New Ministry Plan
- January 2007 Calendar
- Meet Our New Church Secretary
- Music Opportunities
- A Letter From Our Bishop

## Church Secretary Retires after 9 Yrs. Faithful Service

Carol McClellan, a long-time church member of St. Matthew's has retired from her staff position as Church Secretary after 9 years of faithful service. Rev. Brad called her "the finest secretary in the annual conference." Her pleasant manner on the phone and with walk-ins at the office made for a sense of welcoming and care for anyone at their contact with the church.



Over the past couple years, Carol's parents have been less able to care for themselves without the help of family. Carol, of course, has been there for them and has found that recently the need has increased to a point where they are needing her more and more. Being the person that she is, she is putting their needs above her own and has resigned her position at St. Matthew's. While we will miss her in the office, we hope we will see her frequently in worship. She will continue to be a member of St. Matthew's and part of the worshipping community.

Office Hours are 9:00a—2:00p  
Monday through Friday

Our pastor, The Rev. Dr. Bradley Resare is available for general or confidential appointments by calling (805) 498-6910 or e-mail: RevResare@adelphia.net

If you would like the daily e-mail quote & comment: "A Thought for Today From Rev. Brad" please e-mail your request to RevResare@adelphia.net



## Two Hartley Grandchildren Baptized

Proud grandparents, Bill and Lynne Hartley, celebrated the baptism of two of their grandchildren on Sunday, November 26th. Beth and Beau were in town from Georgia for the Thanksgiving holiday, with their new baby, Kaylee Elizabeth Ellerson. Mike and Danielle are local, and with their new baby, Landon Michael, it seemed a great time for a double baptism.

Kaylee Elizabeth and Landon Michael were baptized at the 10:00am service with the whole congregation engaged in this wonderful celebration of initiation into Christ's holy Church. Welcome Landon and Kaylee to the St. Matthew's family!



education program which is a minimum requirement for all persons seeking ordination as elders in The United Methodist Church.

An Elder in the church is a pastor who is set-aside for full time work in ministry and is licensed by the church to preach the Word, serve in the name of God and the



Our new Pastoral Intern, Sione Nai and his wife Leslie enjoy the patio at our 40th Anniversary Celebration in September.

Church, administer the sacraments of Baptism and Holy Communion and to bring "order" to the church. (Serve as an administrator of the local church).

Field Education is designed to provide opportunities to observe these roles in real experience. During this past semester, Pastor Nai has sat in on numerous pastoral care experiences including counseling sessions and baptism orientations. He has assisted at memorial services and a wedding and has also led worship and delivered the sermon on several occasions. Pastor Nai meets formally with Rev. Brad on a weekly basis and with a lay driven "Teaching Placement Committee" monthly, headed by Rev. Joe Lewolt.

In addition to his regular pastoral duties of pastoral care, preaching and teaching,, Pastor Sione will be busy this next semester working with Rev. Brad and the Core Group of leaders on a major "rollout project" involving small groups and developing new curriculum based on the book "Deepening Your Effectiveness." Watch for it!



## Abigail Reiko Inouye, born to Nathan and Tanya Baptized and welcomed!

Abigail was born on Oct. 2, weighing 7lbs, 4 oz. to Tanya and Nathan Inouye. Rev. Brad offered a blessing in the hospital when she was just 4 hours old. Abigail Reiko will be further blessed with the sacrament of Baptism by God and the Church on January 14th. What a sweetie she is! And Mom and Dad are suitably proud.



## Kemper Andrew Wilson makes his Debut

Kemper Andrew Wilson was born on August 29th to proud parents, Keith and Kari Wilson. Kemper weighed in at 7 lbs, 5oz. Kari and Keith are doing well and adjusting to parenting just fine. Little "Kemp" seldom cries and is developing quite a personality. Gee, I wonder where he gets that? Kemper has been to church on numerous occasions already. What a little trooper! *Doesn't sing much though.*

## St. Matthew's Gets Intern to Serve as Assistant Pastor

He goes by "Pastor Sione." Sione Nai has been busy at St. Matthew's working with Rev. Brad in all aspects of pastoral ministry.

Pastor Sione has just completed his first semester with us and is preparing to begin the second and last semester of Field Education Training as part of a class he is taking at Claremont School of Theology. This will complete his field education requirement as he works toward completion of his Master of Divinity at Claremont. The Master of Divinity is a 3-year graduate

# Church Family

January, 2007

Updates and Family News: Renee James, 498-6910, StMatts@highstream.net



## Edgar Michael Mesa born to Brandi Mesa on Jan. 3rd

Little Edgar was born at 11:11am on Tuesday, January 3rd at Los Robles Hospital. He weighed 6 pounds and 15 ounces. Mommy is doing just fine and baby is just so tiny. His feet are the size of a pastor's thumb. Edgar Michael Mesa, God's new creation, our newest member of the body of Christ.

## Lynda and Ed Starman Renew Their Marriage Vows in Candlelit Service

Lynda and Ed Starman renewed their wedding vows in the candlelit sanctuary at 7:00p on Nov. 2nd, their 10th Anniversary. They had the sparkle of newlyweds as they participated in this wonderful ceremony officiated by Rev. Brad. Their daughters also participated in the ceremony celebrating their love for one another and the oneness they all share as a blended family. Although the ceremony was fun and light, the wedding renewal party was dressed to the 9's. There was laughter and tears of joy. Following the service, there was a delightful reception at the Starman residence, where many friends gathered for some fine food and fellowship. May they continue to live with God's Blessing upon their marriage.



## Windy Campbell and Luis "Adrian" Dreckmann Marry at Thanksgiving

Windy Campbell, daughter of Donna and Jack Doman married Luis "Adrian" Dreckmann at 10:00 a.m. on November 25th in the sanctuary at St. Matthew's. It was a beautiful wedding followed by a great reception at Duke's in Malibu.

They both opted for a traditional ceremony and lit a Unity Candle between them. At one point, the ceremony involved Windy's son Sage, who was pleased to welcome Adrian into the family.

The newlyweds honeymooned in Jamaica are currently at home in Newbury Park.

**Confirmation Classes  
Begin February 11th  
For All Young People  
between the ages  
of 12-18 yrs.  
If you know anyone  
who is interested  
have them call  
Rev. Brad  
(805) 498-6910**



A boy and his dog with the right idea

## Directory Updates

Please make these changes in your Church Directory dated September 2006

### Changes:

Bob Biery

E-mail: [r\\_biery@msn.com](mailto:r_biery@msn.com)

Ryan Blanck

E-mail: [ryan.blanck@gmail.com](mailto:ryan.blanck@gmail.com)

Jim and Barbara Crowdis

E-mail: [bjcrowdis@gmail.com](mailto:bjcrowdis@gmail.com)

Brad & Jeann Gillespie - 415 Via Cresta

Rev. Joe & Dorothy Lewolt

E-mail: [jlewolt@verizon.net](mailto:jlewolt@verizon.net)

Robert Wiles

E-mail: [bobsong@earthlink.net](mailto:bobsong@earthlink.net)

### Omissions:

Holzer, Scott

York, Amanda

Pooler, John & Renee

Painaiaks

Wharton, Shannon

Sanborns

Stipulkosky, Lauren

Solarezes

Berry, Joe (not Randi)

Shepherds

Heinemann, Andrew

Schlesingers

### New Additions:

Brian Pennington 985-5365

2011 Outsail Lane

Oxnard, CA 93035

John & Dee Dee Haury 523-2316

13417 Pacific Breeze

Camarillo, CA 93012

E-mail: [dhaury@adelphia.net](mailto:dhaury@adelphia.net)

Jonathan & Kaoru Yim (317)748-0087

432 E. Wilbur Rd. #208

Thousand Oaks, CA 91360

E-mail: [jonathan\\_kaoru@hotmail.com](mailto:jonathan_kaoru@hotmail.com)

## Jim Maher, now with Jesus

Jim Maher, beloved husband of Jean Maher, passed away this past month. Please keep Jean and her family in your prayers as they mourn the loss of this wonderful and caring man. James R. Maher, absent from view, present with the Lord.

### Nathan and Tanya Inouye

are pleased to announce  
the baptism of their daughter

**Abigail Reiko Inouye**

on January 14, 2007 at 10:00am.

Godfather will be Matthew Inouye  
and Godmother will be Melissa Winter,  
her uncle and aunt.

St. Matthew's has a variety of venues for wedding services

If you are interested in holding a wedding service at St. Matthew's, please call Rev. Brad to discuss it. We offer a full service wedding coordinator as well.

Housewarmings are a wonderful time to have a Blessing of the Home. Rev. Brad is always happy to conduct this service. [revresare@adelphia.net](mailto:revresare@adelphia.net)



# Good News

# Youth Group

www.NewburyParkChurch.com

January, 2007

Updates and Youth News: Shana Gries, (805) 201-5906, SMUMYF@hotmail.com

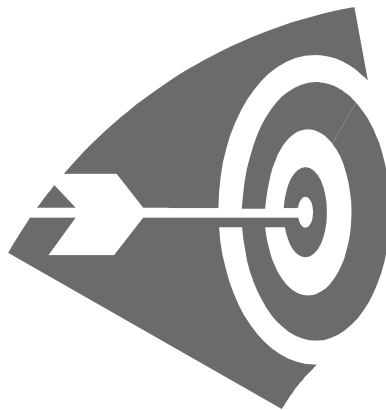
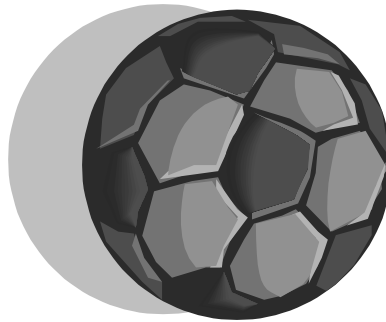
## Schedule of Events-please note all activities this month are on Sundays.

**Jan 7– Sunday**  
5-6pm. Family youth potluck. Let's share a meal to start the year! Please sign up in sanctuary with the item you will bring-families welcome.

**Jan 14– Sunday**  
5-6pm. Finalizing plans for our February fundraiser! Come with your ideas for ticket sales, food, and decorations.

**Jan 21– Sunday**  
5-6pm . Please come for an afternoon hike. Bring water and a jacket.

**Jan 28– Game day!**  
Bring a game or have one in mind to share with the rest of the group. Can be a board game, trivia, or sports. Please bring the necessary equipment with you or let me know what we will need.



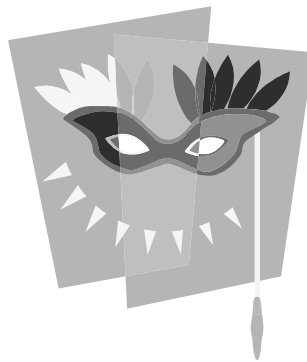
## Parents Notes– Please Read. . . . .

Please note that all activities from now on will be held on Sundays from 5-6pm unless noted otherwise. This is done so that we can establish a

set schedule and so that everyone who has not been confirmed will be able to attend classes in February. There may be other activities such as

service projects that will be in addition to our set time. Please sign up separately for those. Don't forget, parents meeting at month's end.

**Shana Gries**  
**Youth Group Director**  
**Email: smumyf@hotmail.com**  
• *Phone: 805-201-5906*



## Camp Colby Summer Camp Experience Beckons St. Matthew's Youth

Colby Ranch is nestled in the beautiful Upper Tujunga Canyon of the Angeles National Forest. Just 45 minutes north of Pasadena, this full service camping facility is owned and operated by the California-Pacific Annual Conference of the United Methodist Church.



Summer camp experiences for youth have been described by many as life changing and faith forming. Summer camp transforms lives, builds faith and makes lifetime friendships. Pastor Brad's kids have all gone and describe it just like this...

"Some think Church camp is somehow boring or maybe un-cool. People who have gone laugh at these comments because they understand just how awesome this weeklong experience can be."

During the week, there will be games, themes, singing, celebrating, learning, praying and lots of time to have fellowship. There is hiking, crafts, swimming in a beautiful pool, pool table and ping pong, and just hanging out with new friends. There is Bible study & cabin competitions.

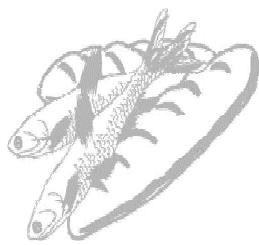


Campers will be assigned to and stay in cabins, sleeping in bunks and eating in the hall. The food is pretty good, and the company is sensational.

**Summer Church Camp  
Schedule at Colby Ranch**

**Junior High/Middle school Camp—  
July 15-21, 2007**  
Youth going into 6th-9th grades in the fall of 2007

**Senior High Camp—  
August 4, 2007**  
Youth going into 9th-12th in the fall of 2007 & '07 grads



# Good News

# Servant Ministry

www.NewburyParkChurch.com

January, 2007

Updates and Ideas: Rod Womer & Barbara Karplus, (805) 499-3115, rwomer@verizon.net

## Conejo Job Training Program Ready to Launch

St. Matthew's is one of ten lead churches who have been identified to assist in the formation of a new Job Training Program for underemployed workers with families in the Conejo Valley.

While a permanent training facility has not yet been selected, the Job Training Program is moving forward with plans for its first class. The first Carpentry course will likely be held in Calvary Community Church's wood shop, provided they can get some approval & liability details worked out. Pastor Kirk DeWitt asks for prayers that this all goes smoothly. If all is well, the Carpentry course could begin as early as the third week of this month. In addition to the wood shop, Calvary may also provide classroom space.

The program's first Carpentry instructor, Sr. William Lemus, emigrated from Guatemala in 1985. The Conejo Valley Job Training Program is "a dream come true" for William, and he has much energy and passion for this program. Lutheran Social Services will identify 10-12 high potential students for the first course. Students must be U.S. citizens with a good work history.

Each course of study is last 12 weeks, with two two-hour classes per week. Curriculum will include finish carpentry fundamentals including the safe use of tools, selecting materials, the art of precise measurements, and precision cutting. Students will be trained to install crown molding, baseboards, wainscoting, and how to build cabinet boxes. Hands-on practice opportunities will be provided through Habitat for Humanity. Participants will also be taught customer service and business ethics. While the student is in the course, LSS will work holistically with the student's family on other issues, such as budgeting and financial management.

The Lutheran Social Services office in Thousand Oaks helps 20,000 individuals a year, many of whom are working two or three minimum wage jobs, often barely able to make ends meet. This program will take unskilled laborers earning from minimum wage to perhaps \$10/hour, and teach them skills that will qualify them to earn \$15-24/hour as a beginning finish carpenter's assistant. The Conejo Valley is currently suffering a critical shortage of trained carpentry assistants.

St. Matthew's is a lead church for this program and provides significant financial support on a monthly basis. Rev. Brad has been serving as a consultant to the Board.

## United Methodist Agency to Restructure Designated Mission Program

"The Advance for Christ and His Church," the designated mission-giving program of The United Methodist Church, is being restructured to better equip it to reach donors. This will involve the reconfiguration of professional positions within the organization and the closure of five offices by March 8, 2007.

The almost 60-year-old Advance is a channel for the support of missionaries, mission projects, and emergency relief and rehabilitation. It is "second mile" mission giving; contributions above the funds from the basic World Service fund of the Church. One hundred percent of each gift goes to the cause designated. The General Board of Global Ministries, the international mission agency of the UMC, pays all administrative costs.

The new director of the Advance, Shawn Bakker, has expertise in fund-raising and non-profit marketing. In the new plan, she will have general oversight and serve as the Advance "ambassador" to the Church and beyond. She will be assisted by an executive secretary for marketing and promotion, and staff dealing with gift coordi-

nation, project coordination, and annual conference relations. The Advance was established in the late 1940s to assist with post-World War II humanitarian needs of that period. In a typical year, some \$30 million is given for a wide range of mission opportunities. In years of dramatic natural disasters, such as the South Asia tsunami in 2004 and the Gulf Coast hurricanes of 2005, much more is received for emergency relief and rehabilitation.

## Appalachia: Red Bird Mission in Financial Trouble

*A UMNS Report by Kathy L. Gilbert*  
A significant decline in contributions has created a crisis that may result in the closing of the school at Red Bird Mission, according to the mission's executive director. Red Bird is one of four mission institutions of the United Methodist Red Bird Missionary Conference. The conference is in an isolated area in the heart of Appalachia, a geographic region that stretches along the Appalachian mountain range from Mississippi to southern New York.

Red Bird Mission School in Beverly, KY., has been in existence since 1921. For the past three years the mission has been operating with a deficit, using reserves to meet the shortfall, said the Rev. Fred Haggard. The mission includes a clinic, retail operations, community outreach and a work camp. "The cost of education takes the biggest percent of our budget," he explained, adding that the other parts of the mission are able to raise funds through their ministries but the school has no real way to raise money. This year, the budget shortfall is \$500,000. "We jumped from having a pretty bad situation to a near critical situation," Haggard said.

The mission has enough money to operate through 2007, but if no more funds are received decisions will have to be made about what to cut. "It could mean a loss of the school," he said. "Most likely it would mean cutting out the high school program."

Office Hours are 9:00a—2:00p  
Monday through Friday

Our pastor, The Rev. Dr. Bradley Resare is available for general or confidential appointments by calling (805) 498-6910 or e-mail: RevResare@adelphia.net

If you would like the daily e-mail quote & comment: "A Thought for Today From Rev. Brad" please e-mail your request to RevResare@adelphia.net

# Servant Ministry

January, 2007

Updates and Ideas: Rod Womer & Barbara Karplus, (805) 499-3115, rwomer@verizon.net

## St. Matt's Helps Support AIDS Orphans in Africa

St. Matthew's Youth and Adult servant ministers conducted a Christmas Market this past month in the Fireside Room selling African-made products with all proceeds going to the support AIDS orphans in Africa. The sale grossed \$812.00 which has been sent to Africa Team Ministries, a non-profit, multi-denominational organization serving churches in East Africa, specifically Uganda and Kenya. The money raised in this project will go to support orphans there whose parents have died of AIDS. Africa team Ministries has been engaged in a variety of projects of this kind since 1985.

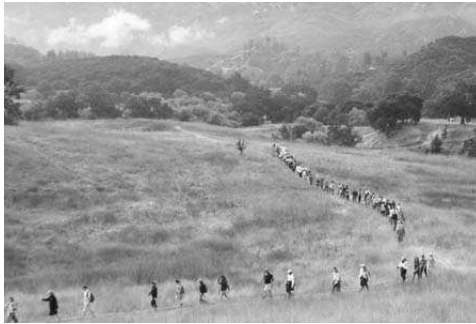
According to the 14th international AIDS Conference, the number of children worldwide who have lost at least one parent to AIDS has skyrocketed from 1 million in 1991 to 13.4 million in 2006. It is projected that this number will double by 2010. Of the 34 million orphans in Africa, it is estimated that one third of those are due to AIDS.

The Mission Statement for Africa Team Ministries is as follows: As an intermediary ministry between African and American churches of the Episcopal, Methodist, Presbyterian and Anglican denominations we provide funds for orphan and refugee relief, missions and evangelism in East Africa. We currently have children registered for sponsorship in Kenya and Uganda, Support is sent directly to each Bishop to provide school fees, tuition, books, and uniforms, ensuring that the children receive education and a measure

## Church Folk Take-a-Hike at Paramount Ranch

St. Matthew's participated with a few hikers and spectators at this year's "Take-A-Hike" Breast Cancer Walk to help fund breast cancer research at UCLA and USC medical centers on October 14th. All total, 500 hikers raised \$70,000. This was the 11th annual "Take-a-hike" to raise money for this very important cause. It was also a great walk. The St. Matt's hikers completed the advanced hike.

The route offered picturesque vistas of the



Pacific Ocean and the western movie set still used by movie and television studios. In addition to the hike there was a silent auction and delicious and nutritious food booths for the participants and spectators. According to the American Cancer Society, breast cancer affected 260,000 women and 1,600 men in 2005, and one in eight women will be diagnosed with breast cancer in their lifetime.

## The Environment...Societies Woes...Our Calling... Loving God's creation, loving God's People

By P.J. Resare

God calls us as a people to have "dominion over the earth" as well as "do for the least of these." St. Matthew's is starting a new committee this year under the SERVE umbrella. This group is, and will be committed to responsible Social Action. As we begin, we hope to educate our congregation regarding social and environmental issues and also begin some projects. Increasing awareness of our stewardship responsibilities towards the earth and its people will be our goal. In January, we hope to educate people on the recycling resources available in our area and to begin a more vigorous recycling program at the church. Some of you may

have seen our new blue wastebasket at the back of the Sanctuary. We would like to start recycling bulletins after our services and make sure that the church office recycles as much paper as possible. If you have ideas or issues that you would like to see this committee pursue, please talk to anyone on the committee: Tina Martin, Marilyn Matthews or Pam McDonald. Or join us.

**Opportunities to Serve in January**

Guidepost Knit for Kids  
Call Kathy Holzer at 498-7107

California Pacific Annual Conference ~ Santa Barbara District



### Community Rebuild Mission Project

Waveland, Mississippi

*We are rebuilding a community,  
It's more than drywall and shingles...  
it's love and hope!*

**Carpenters! Roofers! Contractors! Helpers!**

The California Pacific Annual Conference will be sending District Teams of twenty five each to Waveland, Mississippi during four weeks in April & May, 2007. We will not be necessarily building anything from the ground up. We will be restoring damaged structures, gutting, roofing, framing, wiring, drywall, painting, etc.

The Santa Barbara District will be working with the Santa Ana District to put together a work team for the week of

**April 7 - 14, 2007.**

There are 25 work team spots for each district...50 total.  
Each participant will need to pay their own way, approximately \$700/person.  
We will also be needing to raise money for supplies.

*This is a chance to make a difference in people's lives.  
It is a chance to use our hands to express our faith.*

We invite you to be a co-missionary...  
whether with your helping hands or with a financial gift.

Contact the Santa Barbara District Office for additional information if you're interested in joining the work team.  
818-882-8005 or sbdistumc@earthlink.net.



Please send your donations to:

**Santa Barbara District UMC ~ Mississippi Rebuild Project**  
10824 Topanga Canyon Blvd.  
Chatsworth, CA 91311-1350

Office Hours are 9:00a—2:00p  
Monday through Friday

Our pastor, The Rev. Dr. Bradley Resare is available for general or confidential appointments by calling (805) 498-6910 or e-mail: RevResare@adelphia.net

If you would like the daily e-mail quote & comment: "A Thought for Today From Rev. Brad" please e-mail your request to RevResare@adelphia.net



## Does the Church Have a Future?

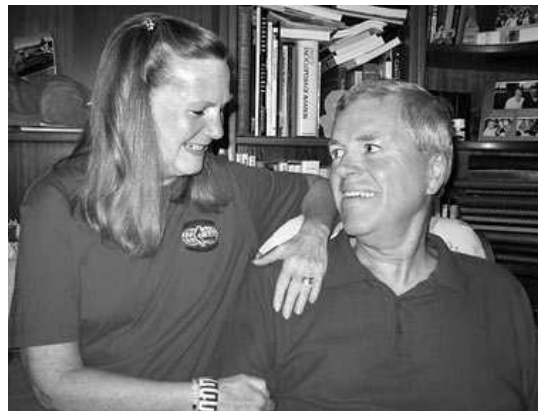
This is the season of new beginnings, new hope, of expectations for this year to be different than the last one. But will it be different? This is the season to celebrate Jesus' birth, even as the promise of his coming will soon shift into the challenges of his ministry. Although the story is familiar, we enjoy reliving the drama and excitement of his first appearances and miracles: He comes promising the Kingdom, now can he deliver? Will the world be different because of his birth, his life, his coming death and resurrection? In our congregations, hope and expectation take the form of new Bible studies and ministries. For the Conference, we are well on our way with plans for coming together around the table in Redlands for the Annual Session. In the midst of it all, I am haunted by the question: *Will it make a difference?*

**Will the future be different because of what we do?** I want to make a difference—it is what I have given my life to, just as so many of you give your gifts in all kinds of ministries.

**I believe the church has a future only if it can make a difference.** Yet the church itself will have *to be* different to do so. Let me explain: I've been at this long enough to see that many things remain unchanged, inside and outside the church. Outside, the poverty and injustice and spiritual hunger we are called to address will always be there, as Jesus said. But how we engage in ministry should reflect our changing times, and failure to change cuts us off from our field of ministry. Here I see that inside, the workings of the church, the organization, the way we do things regardless of who serves on committees and in leadership—these seem to persist unchanged over time. As we stand at this turning point of the calendar and the church season, the time is ripe for

change—inside the church. The church can make a difference for the future, **but only if we pay attention to the future.**

Mostly, we do not pay attention to the future. Instead, we invest much time and attention to the way things have been, and trying to carry those forward. It is as if we went to the grocery store with a shopping list for a menu for a family dinner in 1970,



Bishop Mary Ann Swenson and her husband Jeff relax at home during the Christmas holidays.

and have clung to that shopping list ever since. Never mind that the people around the table have changed, that tastes have changed, that we've learned so much about dietary needs and health in the past 30 years, that new cuisines and recipes are at hand—we're still working with that one list, one menu. Let's take that metaphor a step further: we're also coming to table with every memory of all the past times we've come to the table. Sometimes those are good memories, but like any family, there also some less positive recollections. So we come bearing old slights, old wounds, some minor, some major; and as the years go by, they pile up and become more and more complex, and as new members come into the family, they learn our behaviors and add their own and—well, that's family, isn't it?! The difference is we are a family with a purpose beyond

just being family. We are a fellowship of disciples called to serve God's purposes in the world, not our own.

**Looking inward and backward is contrary to Jesus' teaching,** starting with *"Those who put their hand to the plow and look back, are not worthy of the kingdom."* (Luke 9:62) This is why I believe that the church has a future, but only if we can honor our past, let it go, and embrace the future. We must pay at least as much attention, if not more, to where the world is going, and not just where we have been. If the world is to be different, and the Church is to be a part of that, then it begins with our own transformation. As Gandhi said it, "Be the change you want to see." Jesus said it this way: "The kingdom of God is within you." Christ comes not so that we can stay the same, but so that we—and the world—can be transformed. This is the Good News, born two millennia ago, ready to be born again in us today. I wish you a happy and *different* New Year.

Shalom,

*Bishop Mary Ann*

## Nigerian Clergywoman Receives CST Scholarship

The Rev. Eunice Musa, the first woman clergyperson to serve in the Nigerian United Methodist Church, is also the first recipient of the new Cal-Pac/Claremont School of Theology African Scholarship Fund. Currently the scholarship represents an award of \$15,000 and will likely include a similar amount for this next semester. Rev. Musa has served as pastor in one of the largest congregations in the Nigeria UMC, and was also conference treasurer. She plans to return to Nigeria after completing her doctoral study in pastoral care and counseling at CST in order to help women and children traumatized by poverty, abuse and conflict. In 2003, Rev. Musa preached at the Cal-Pac Annual Conference at the University of Redlands.

*The 2007 Cal-Pac Annual Conference*

will be held the week of June 20-24 at The University of Redlands

If you would like more information about this event go to [www.Cal-Pac.org](http://www.Cal-Pac.org) or ask Tina Martin, Barbara Crowdis or Rev. Brad. All are welcome to attend.

## Claremont Seminary Loses, Regains Accreditation

*A UMNS Report by Linda Green*

The southern California United Methodist theological school that lost and regained its accreditation this year has until February 2008 to show that it can operate within its budget and a new business plan.

The Western Association of Schools and Colleges reversed its decision in November to terminate the accreditation of Claremont School of Theology and placed the seminary on "Show Cause" status. The association's accrediting commission for senior colleges and universities had decided at a June 22-23



meeting to terminate Claremont's Accreditation effective Aug. 10th. Following a visit to the 50-year-old theological school last March, the commission had publicly sanctioned the school for not being in compliance with commission standards around financial planning and management, and said Claremont had not satisfactorily explained or corrected deficiencies.

The basic criteria for accreditation revolve around organization, curriculum and instruction, support for students' personal and academic growth, and resource management and development. The association's Accrediting Commission for Senior Colleges and Universities accredits 150 degree-granting institutions in California, Hawaii, Guam, the Commonwealth of the Northern Marianas, American Samoa, the Federated States of Micronesia, the Republic of the Marshall Islands, and East Asia.

Claremont School of Theology is one of 13 seminaries related to the United Methodist Church in the United States. Following the Rev. Dr. Phil Amerson, the Rev. Dr. Jerry D. Campbell had been at the helm two weeks when the association acted to terminate the institution's accreditation. He is the school's sixth president and the current student enrollment is 289.

## Deceased Snow Hiker: Son of Cal-Pac Layperson

The tragic story aired last month on the national news about the young family stuck in the snow has local ties to our Methodist family. James Kim, who was found dead in the Oregon snow last month, is the son of Spencer Kim. Spencer Kim is an active layperson at Korean United Methodist Church in Woodland Hills.

James Kim, his wife, and their two children were on a family trip when they went missing Nov. 25. While on their way home, the family took a wrong turn and got stuck in the snow. Kim had left the car and his family four days before his body was discovered. Autopsy results show that he died of exposure and hypothermia.

Spencer Kim is very active & serves on the California-Pacific Conference Leadership Team, the Claremont School of Theology Board of Trustees, and the board of the United Methodist Higher Education Foundation. To send notes or support to the family, visit <http://jamesandkati.com/>.

## United Methodists Fill 61 Seats in New Congress

*by Albert J. Menendez*

Sixty-one United Methodists will serve in the 110th Congress - approximately the same number as were elected in the 108th and 109th Congresses. The denomination also remained in third place among all religious groups. Some partisan reshuffling has occurred, resulting in a net gain of four Democrats. In fact, all five newly elected United Methodists in the House of Representatives are Democrats. There are 34 Republicans and 27 Democrats in the Methodist membership in the House of Representatives. There were no changes in the 13 United Methodists serving in the U.S. Senate, where they are second in number to Catholics.

## Set-Apart for Mission: Deacons off to Orlando

*By Victoria Rebeck*

As a record number of people prepare to become United Methodist deacons, a celebration sponsored by the church's General Board of Higher Education and Ministry will draw about 600 diaconal ministers and deacons to Orlando, April 19-22, 2007. "This is a forward-looking event," said the Rev. Ilseman, a deacon in Northern Illinois. "Deacons are carrying God's love into all corners of society in new and inventive ways." And there are more "servant ministers" every day.

According to GBHEM's Division of Ordained Ministry, 1,642 people are candidates to become deacons. If most of those candidates complete the process, the number of deacons will double. Currently, there are 1,377 active deacons and 210 retired. Participants in the Orlando, Fla., meeting will meet their colleagues from around the world to network, share ideas, celebrate, and learn of new opportunities.

Sabbath-keeping will be a focus of the event. Time is scheduled for prayer, journaling, walking, and other restorative practices. Practical workshops include a training for public speaking, explorations of justice ministries and cross-cultural ministries, and more. Participants will also walk to raise funds for Project Tariro, a ministry led by deacons that helps people in Zimbabwe to live with HIV/AIDS.

The United Methodist Church began consecrating laypeople as diaconal ministers in 1976 and ordaining deacons with full clergy rights in 1996. Deacons are clergypersons who are called to proclaim the Word and to serve in the name of God. They are "Set Apart" for unique forms of ministry, often including youth work, music ministry, and mission work.

## How is our pastor involved?

Our Senior Pastor, the Rev. Dr. Bradley Resare shares his passion for church revitalization through the Methodist Connection by serving as Chair of the Santa Barbara District Planning and Strategy Committee, as a member of the Jubilee Grant Task Force, and on the Board of Congregational Development. He also serves as Vice-Chair of the Committee on the Episcopacy.

### Gifted United Methodists sought for '08 General Assembly

Local church choirs, ensembles and bands, instrumentalists, singers, dancers and dance groups, as well as visual, video, textile and performing artists from around the world, are invited to send audition tapes for a chance to perform at worship services at the 2008 General Conference. Mark Miller, a co-music director for the 2008 conference, is seeking United Methodists interested in sharing their gifts in worship to submit a recording (DVD, CD, VHS, cassette, mpeg, mp3) plus a brief bio and other supporting materials by postal mail by March 30, 2007. Address them to Mark A. Miller, director of music, Drew Theological School, 36 Madison Ave., Madison, N.J., 07940, or send them by email to [mamiller@drew.edu](mailto:mamiller@drew.edu). The United Methodist Church's top legislative assembly will meet April 23-May 2, 2008, in Fort Worth, Texas. The 1,000-member international body meets every four years to decide issues of church law and polity.



# Good News In Worship

www.NewburyParkChurch.com

January, 2007

Updates and Ideas: Ella Fletcher, (805) 498-5284, efl61812@aol.com

## Children's Program: "One Surprising Night" an Advent Blessing

December 17th marked the return after many years of the Children's Christmas Program. The children retold the story of the birth of our Savior in drama and song. Seeing them all in their costumes with everyone participating in some way was quite an experience. Thanks to Pam Pond and Nancy Liedblad who coordinated the event.

## Christmas Eve Services Marks Record Attendance

The final count for Christmas Eve services was 298 people who shared the Christmas experience of worship with us. The morning featured the kind of worship that can be seen just about any Sunday. The evening worship experience was celebrated with a candle lighting experience at the end while singing the traditional carol, *Silent Night*. Pastor Sione preached the morning services and Rev. Brad preached in the evening. There were many folks who came to worship that we had not seen for a while. Along with many people who were first time visitors, as well. What a wonderful time of peace and goodwill that was shared by all. May the peace of the season continue to bring you home again and again.

## Wesley Covenant Service Offered New Year's Eve

New Year's Eve was not "dark" at St. Matthew's. Rev. Brad led us through a traditional "Wesley Covenant Service" written in 1755, by the founder of the Methodist movement, John Wesley. The service was light in singing and heavy in responsive reading and prayer. At the end, participants were invited to sign a covenant with God recommitting themselves for 2007.

## Worship Staffing for January

### January 7, 2007

Preaching: Rev. Dr. Bradley Resare  
Worship Leader: Dan Overton  
Liturgist: Tina Martin  
8:00 Usher: John Fletcher  
10:00 Ushers: John McDonald  
Nathan Inouye  
Acolyte: Mariah Tobin  
Counters: Tim LeRoy  
Joanne Stone  
Nursery: Jeann Gillespie  
Greeters: **Please sign up**  
Flowers: **Please sign up**  
Coffee: **Please sign up**  
Sound/Recording: Bill Hartley  
Welcome Table: Carla Von Zell  
SS Teachers: Kristin Bertrand  
Charlene Wardell  
Pam Pond

### January 14, 2007

Preaching: Rev. Dr. Bradley Resare  
Worship Leader: Dan Overton  
Liturgist: Jen Kuo  
8:00 Ushers: John Fletcher  
10:00 Ushers: Jim Ford & Bill Hartley  
Acolyte: Matthew Chow  
Puppeteers: Taylor Bertrand  
Kelly Chow  
Counters: Ella Fletcher  
Kathy Nubling  
Nursery: Joyce Wheatley  
Greeters: **Please sign up**  
Flowers: **Please sign up**  
Coffee 8:00a: **Please sign up**  
Coffee 10:00a: **Please sign up**  
Sound/Recording: Ralph Matthews  
Welcome Table: Betty Johnson  
SS Teachers: Kristin Bertrand  
Pam Pond, and PJ Resare

### January 21, 2007

Preaching: Pastor Sione Nai  
Worship Leader: Dan Overton  
Liturgist: Ann Lamb  
8:00 Usher: John Fletcher  
10:00 Ushers: Ralph Matthews  
Mike Summers  
Acolyte: William Tobin  
Children Message: Nancy Liedblad

Counters: Ceil Adler & Randi Berry  
**January 21 Continued**  
Nursery: Betty Johnson  
Greeters: **Please sign up**  
Flowers: **Please sign up**  
Coffee: **Please sign up**  
Sound/Recording: Ryan Blanck  
Welcome Table: Pat Mohn  
SS Teachers: Nancy Liedblad  
Janice Kakazu & PJ Resare

### January 28, 2007

Preaching: Rev. Dr. Bradley Resare  
Worship Leader: Dan Overton  
Liturgist: Dan Overton  
8:00 Usher: John Fletcher  
10:00 Ushers: Mike Bertrand and  
Kent Detweiler  
Acolyte: Joelle Saute  
Puppeteers: Joelle & Sean Saute  
Counters: Barb Crowdis  
Nancy Liedblad  
Nursery: Amy Tobin  
Greeters: **Please sign up**  
Flowers: **Please sign up**  
Coffee: **Please sign up**  
Sound/Recording: Randy Holzer  
Welcome Table: Ralph Matthews  
SS Teachers: Kristin Bertrand  
Janice Kakazu & PJ Resare

### February 4, 2007

Preaching: Rev. Dr. Bradley Resare  
Worship Leader: Jack Doman  
Liturgist: Ralph Matthews  
8:00 Usher: John Fletcher  
10:00 Ushers: Randy Holzer and  
Nancy Leidblad  
Acolyte: Joelle Saute  
Counters: Barb Crowdis  
Nancy Liedblad  
Nursery: Joelle Murray  
Greeters: **Please sign up**  
Flowers: **Please sign up**  
Coffee: **Please sign up**  
Sound/Recording: John McDonald  
Welcome Table: PJ Resare  
SS Teachers: Lynne Hartley  
Charlene Wardell  
Pam Pond

The Worship Design Team at St. Matthew's is interested in your feedback. Please e-mail comments and suggestions to Rev. Brad Resare at [revresare@adelphia.net](mailto:revresare@adelphia.net)

Worship Services are held  
Sundays at 8:00a and 10:00a

8:00a service is casual and "come as you are," featuring our praise band on the 1st and 3rd Sundays of the month. The early service is more contemporary.

10:00a is our larger service featuring choirs and more traditional music and singing from the hymnal. This is our traditional service.



# Good News

# The Arts in Praise

www.NewburyParkChurch.com

January, 2007

Updates and Ideas: Jim Cerone, (805) 987-6788, musesickman@aol.com

## Behold That Star Inspiring

Behold That Star, our Christmas Cantata, was performed beautifully on December 10 at both the 8:00 am and 10:00 am services. The Adult Choir, Chime Choir, Children's Choir, soloists, and many accomplished instrumentalists joined together making this season's Cantata the best ever. This was a wonderful, uplifting worship service! If you are interested in singing in any of these choirs, or playing an instrument at church please come to rehearsals on Thursday nights from 7:30 pm to 8:00 pm in the sanctuary.



## Hand chimes offer new way of expressing yourself

Our church has started a great new Chime Choir and has obtained a set of chimes of our own. The Chime Choir made its debut this past fall and has been playing once or twice a month now. It still has room for a few new folks and we are forming a Youth Chime Choir soon. The Chime Choir offers beginning or budding musicians an opportunity to express themselves musically, even if this is a first entry into the world of music. If you would like to give it a try, stop by Thursday Evening at 6:30pm at the sanctuary or e-mail Holly Halweg at [HappyNotesForYou@aim.com](mailto:HappyNotesForYou@aim.com) or call her at (805) 499-3913. Contact her and she will hook you up!



Handchimes

## Sonny and Cher Talent Show Planned

The Annual Sonny and Cher Talent show fundraiser is planned for March 10 from 6:30-9:30pm. Talented acts are practicing already for the big event. If you would like to add to the fun, please contact Mike Summers, (Cher) to get on the show's schedule of acts. This annual event pulls out all the stops and we expect even more famous personalities than ever before, some dead...some alive...but all GOOD! Mike Summers can be reached at (805) 499-4488.

## Parish Artist, Roland Roy Often Seen Sketching in Worship

Parish Artist Roland Roy can often be seen sketching in the worship service many gift drawings for our visiting clergy and musicians. Many people have received these beautiful sketches done quickly and spiritually by Roland Roy who sits with his sketch pad during our worship service at 10:00am on Sundays. We all have special ways of connecting with God, and this is a very unique and special way Roland feels closer to God. Roland has also provided numerous drawings and sketches for worship bulletins and has a painting hanging as you enter the church office, that when stared at reveals a very special image in the garden. Roland Roy has also opened a new Studio in Westlake at 749 Lakefield Rd., Ste. B. Studio Hours are limited, so ask Roland when a good time would be to stop by.



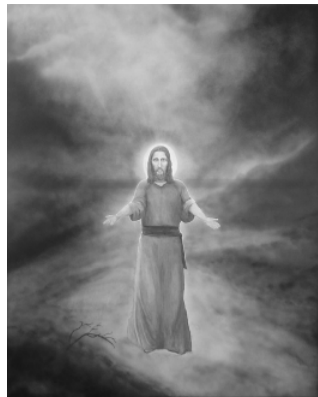
Scott Spindell leads the congregation in song with the Praise Band at our casual 8:00a service on the 1st & 3rd Sunday mornings

## Praise Band Taking Names

If you are interested in being a part of leading worship and singing or playing an instrument in the new praise band, contact Holly Halweg. Praise band rehearses on Thursday nights from 9:15 pm to 10:00 pm. It's never too late to join any of the musical groups at St. Matthew's. Please call or e-mail me with any questions, comments, concerns or suggestions about any of the music at St. Matthew's at (805) 499-3913 or [HappyNotesForYou@aim.com](mailto:HappyNotesForYou@aim.com).

## Steve Wayda Shares a Special Jesus Painting on Display in the Fireside Rm.

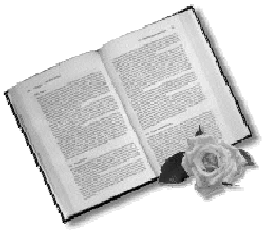
Who knew that Steve Wayda had a hobby of painting? Some of you may have seen a large painting of Jesus in the Fireside Room over the weeks of Christmas and wondered from whence it came. Steve's artistic rendition of Jesus in Red has pleased many. It is on loan to us for the holidays and then will be shown at a local Catholic Church.



## MUSIC PRACTICE TIMES

Thursdays: Choir Chimes-6:30-7:30 pm- Sanctuary  
Chancel Choir -7:30-9:00 pm-Sanctuary  
Praise Band -9:00-10:00 pm-Sanctuary

Sundays: Children's Choir  
9:00-9:30 am-Wesley Room



# Good News

# Studying the Word

www.NewburyParkChurch.com

January, 2007

Updates and Ideas: Pam Pond, (805) 498-2719, rprd@earthlink.net

## Sunday School News

By Pam Pond

We have started the new year and are thrilled with our teachers, students and excellent curriculum. It was great to receive a special blessing for our teachers for a blessed new year. In the Youth Sunday School class the students are enjoying the new curriculum and have made several very important decisions. The students are hoping to decorate the Youth room to make it their own and have decided, as a group, that they want to stay as one large group and not divide into a Junior High and Senior High class. The students have made some important decisions as a group about how they want to learn and the way they want to learn it. Students who disrupt the group and the lesson will be asked by the teacher to politely get back to the lesson and the second time will be asked to return to their parents in church. Youth will also stay in church on Communion Sunday to take in the wondrous glory of God and recommit to God on this day. I was proud of all the children for the positive decisions they all made as a group and am excited for them to learn the beauty of God's great words in such exciting times.

## Make our Sunday School Come A.L.I.V.E.!

Parents, Sunday School Teachers, and other interested parties are invited to a special training workshop teaching teachers to teach. This year's ALIVE Workshop will be held at Simi Valley United Methodist Church on Sunday, January 21 from noon to 3. Participants will discover new ways to teach our children, and Sunday school students, so that they experience learning with all the senses. It will help our students and children explore art, music, games, and more as the participants learn creative ways to teach God's Word. Christian educator, Koreen Miller will lead this workshop. Koreen has taught children,

youth, and adults in public school and in various church settings for over 30 years. She currently serves as the chairperson for the United Methodist Cal-Pac Conference Council on Children's Ministry. The workshop is free and open to Sunday School teachers, parents, and other interested parties, with lunch included. (A free will offering will be taken at the event.) Space is limited, so register early, at least by January 17th, to Leslie Sumner at [leslie.sumner@sbcglobal.net](mailto:leslie.sumner@sbcglobal.net) or you may call the church office at (805) 498-6910.

## Baptized, But Not Yet Confirmed? Over 12 But Under 18? Yes?...Read on

If you, or you know people who meet these criterion, you and they are invited to participate in a 12-week super fun journey of discovery with Rev. Brad and P.J. Resare called "Claim the Name," Confirmation classes. Classes begin February 11, and will be held most Sundays from 2:30 to 4:30pm at the parsonage. Signups start now and will continue until February 18th. The Feb. 11 meeting will be an informational and get to know you experience and time will be allowed for Mother's Day and Easter. The classes will end before Pentecost so we can have a big celebration and worship experience on that day. Come and join the experience. It will be great fun!

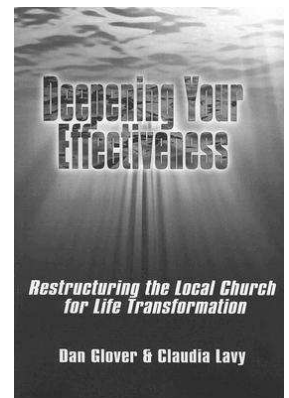


## Pastor's Bible Study Starts

Starting January 10th and 14th, there will be a Pastor's Bible study held weekly in the Fireside Room based on the sermon scriptures or theme for the week. Bible study will be on Sunday at 11:45am and the following Wednesday at 7:15pm. Join

## All-Church Book Study is Planned for to start in Feb.

St. Matthew's will be engaged in an all-church book study beginning in February and March lasting 40-Days and being offered consistent with the Preaching on Sunday, the Pastor's Bible Study, and also a special Small Group Curriculum currently under development. This is a major commitment by the whole church and is a direct response to the initiative recommended by the "Vision Our Future Team," who conducted our 2006 Congregational Assessment. The book Deepening Your Effectiveness written by Dan Glover and Claudia Levy comes highly recommended by both the United Methodist School of Congregational Development, and also our District Superintendent, the Rev. Catie Coots. The leadership of the church has been engaged in studying this book over the past few months and have agreed that the whole church should hear it's wonderful message.



The book, the preaching, the Bible study and the small group experience will introduce a new metaphor for understanding our unique journey of faith; our Spiritual formation and God's transforming of our lives. It will provide us a vocabulary for speaking about our stages of discipleship and will help us remove obstacles that keep us from moving forward in our personal transformation. Plan to commit the time necessary to participate fully in this experience next month. It may offer you an extraordinary series of epiphanies leading you to a new Spiritual identity and place. Questions? Talk with Rev. Brad or Pastor Sione.

Office Hours are 9:00a—2:00p  
Monday through Friday

Our pastor, The Rev. Dr. Bradley Resare is available for general or confidential appointments by calling (805) 498-6910 or e-mail: [RevResare@adelphia.net](mailto:RevResare@adelphia.net)

If you would like the daily e-mail quote & comment: "A Thought for Today From Rev. Brad" please e-mail your request to [RevResare@adelphia.net](mailto:RevResare@adelphia.net)



# Good News

# Becoming Disciples

www.NewburyParkChurch.com

January, 2007

Updates and Ideas: Lynne Hartley, 498-6365, blucru@aol.com

## Yoga Adds a New Night! Now Mondays & Fridays

Our Yogini, (Yoga Instructor) Shana Gries has added a new night for Yoga enthusiasts at St. Matthew's. The ladies who are currently participating say they are experiencing a wonderful increase in flexibility and a sense of wellness. They report that Shana has a way about her that allows for people to move at their own



pace and experience the joys of Yoga without pain and discomfort. By popular demand, Shana is adding Friday nights at 7:00p in the sanctuary. Yoga classes on Mondays at 6:15p or Fridays at 7:00p are held in the sanctuary and last approximately 50 minutes. Classes are open to everyone and are by donation only. Join us for these wonderful balancing and stretching exercises for mind, body, and spirit.

## Biblical Tranquility Garden Nears Completion

It has been an ongoing project but really took a huge step forward over the holidays! The Biblical Tranquility Garden next to the sanctuary was hatched from a plan originally drawn by church member, Debi Dyer and with the help and financial support from the Board of Trustees and others, the project is near completion. The bottom line...it is looking great! This project required a fair amount of dirt moving and irrigation and drainage installation to keep it pristine after completion. Watch and see, as we bring in the final touches over the next few weeks. What a blessing!



### "Two Horses"

Just up the road from my home is a field,  
with two horses in it.

From a distance, each looks like every other horse.  
But if you stop your car, or are walking by,  
you will notice something quite amazing.

Looking into the eyes of one horse will  
disclose that he is blind.

His owner has chosen not to have him put down,  
but has made a good home for him.  
This alone is amazing.

If nearby and listening,  
you will hear the sound of a bell.  
Looking around for the source of the sound,  
you will see that it comes from the  
smaller horse in the field.

Attached to her halter is a small bell.  
It lets her blind friend know where she is,  
so he can follow her.

As you stand and watch these two friends,  
you'll see how she is always checking on him,  
and that he will listen for her bell and then  
slowly walk to where she is, trusting that she  
will not lead him astray. When she returns to the  
shelter of the barn each evening, she stops  
occasionally and looks back, making sure her  
friend isn't too far behind to hear the bell.

Like the owners of these two horses,  
God does not throw us away just because  
we are not perfect or because we have problems  
or challenges. He watches over us and even brings  
others into our lives to help us when we are in need.

Sometimes we are the blind horse being guided by  
the little ringing bell of those who God places in our lives.  
Other times we are the guide horse, helping others see.

Good friends are like this.  
You don't always see them,  
but you know they are always there.

Please listen for my bell and I'll listen for yours.

## Wednesday Night Book Study Offered Off Campus

Dan Overton and Casey Goldberg are coordinating a small group discussion opportunity using a book by James W. Moore titled *Rich in the Things That Count the Most*. The author believes that whether or not we are wealthy, every one of us can be rich in the things that count. The book is twelve chapters long, but we expect to discuss two chapters each week and finish in six weeks.

An idea of Mr. Moore's writing style can be gained from the titles of some of his other books which include, *Yes, Lord, I Have Sinned, But I Have Several Excellent Excuses*, and *God Was Here and I Was Out to Lunch*. Meetings will take place at various group members' homes each Wednesday at 6:30 P.M. Anyone interested in being part of this fun and educational time can call Casey @ 805 368-6900, her cell phone, for meeting locations or other information.



The Pastor's Bible Study is also on Wednesday Evening

## New Book: Deepening Your Effectiveness Will Be Center of a New All-Church Learning Focus

A comprehensive program embracing the Book "Deepening Your Effectiveness will" begin in February. This 40-Day All-Church study will include weekly topical worship experiences, weekly study points for Bible study, special small group experiences to engage in the weekly subject matter. This new book by Dan Glover and Claudia Lavy provides a great

new metaphor for understanding our ongoing Spiritual journey, helping us to become closer disciples of Jesus Christ. Plan to make a real commitment to this 7-week experience next month. The Core Team of leaders at St. Matthew's, in conjunction with the "Vision Our Future Team" has endorsed and will be involved in its complete development and implementation. Look for further details in the February Newsletter and weekly bulletins. If you have questions, please call pastor.

Office Hours are 9:00a—2:00p  
Monday through Friday

Our pastor, The Rev. Dr. Bradley Resare is available for general or confidential appointments by calling (805) 498-6910 or e-mail: RevResare@adelphia.net

If you would like the daily e-mail quote & comment: "A Thought for Today From Rev. Brad" please e-mail your request to RevResare@adelphia.net



# Good News Church Business

www.NewburyParkChurch.com

January, 2007

Updates and Ideas: Rev. Dr. Bradley Resare, 498-6910, RevResare@adelphia.net

## Pam Suggs Finishes Term as Chair of Trustees

*“A Note from the outgoing Trustee’s Chairperson”*

*Dear Friends,*

As the year changes to 2007, I will be turning the Trustee’s chair position over to someone new. When I first joined the Trustee’s Committee, along with the desire to give of my time to do something useful for the church, I came with a personal desire to learn more of what it takes to keep the church [property] going on a nuts-and-bolts level. I had experience running a household with a small home (not an easy job in itself) and I wanted to see what went on behind the scenes at the church. I had attended since the 1980’s.

Well, I have learned a lot. Most striking to me is the amount of “unnoticed” time people put in here and there to keep things going, often when no one else is aware that there is even a need. Today, Alice painted a small section of trim that she had noticed near the sanctuary doors. I had never even noticed the area, but after she touched it up, it looked nice and neat. Some of those things are visual, like the garden that Amy cares for, or the area that the boys from Pack 3730 planted, or the potted plants in front of the office that Kathy donated and cares for, or turning the waterfall on and off every Sunday (thanks! Ushers), or the Tranquility area (Thanks Debi and Sid and others). But others are not seen unless something goes wrong like the light bulbs high up in the parking lot (thanks Bill, Steve and John); or the weed abatement John did this year; or watering the trees up above the patio (thanks Bill –it never occurred to me that they might need to be watered); or taking a day to clean out the waterfall like Jim did; or clearing the pine needles off the Education Building (thanks Sid, Jim and probably others); or otherwise making sure the rain water is diverted around the buildings rather than through them like Bill, John, Jim, Jack and others

have done during the heavy rains; working on the Parsonage (Dale and others). There are certain people who just show up –all the time- to check on things and to keep current regarding what is going on.

Carol, Jo Ann, Pastor Brad, Bill and now Linda have advised me when I had paperwork to do, and have helped me to complete it (and have tolerated my always full mailbox while I looked for time to get organized). Barbara has been a great source for “what needs to be done” for our agendas. And Bill has been invaluable in handling the overflow when I could not handle things in a timely manner and just knowing so much about the job. Having Sid’s support as Secretary made the minutes, agendas and organizing the meetings so much easier. Pastor Brad has been an inspiration to me along the way.

I am excited about the new vision for leadership in the church and the training that next year’s leaders will have available. I have read “Deepening Your Effectiveness” and give a hearty “Yes!” to the insight the authors have into what I have experienced as I have moved (sometimes stumbled) into a more active role in church service/leadership. I think it offers a wonderful model for understanding this transition and smoothing the way as well as offering the spiritual “food” for the journey.

I appreciate the opportunity to grow, working with wonderful people, and I look forward to 2007 to see where St. Matthew’s goes from here.

Namaste,  
(the light in me honors the light in you)

**Pam Suggs**  
pjcs127@aol.com



New Secretary, Renee James, her husband Rick, and their daughter Lauren

## New Church Secretary a Great New Addition!

Renee James began work with us the Monday before Christmas and has already shown herself to be a valuable addition to the St. Matthew’s staff.

Renee comes from a long line of Pastors of the Church of the Nazarene, and was raised in a Nazarene parsonage. Very much like the United Methodist Church in theology and beliefs, the Church of the Nazarene is a Protestant Christian church in the Wesleyan-Holiness tradition. As a “Pastor’s Kid,” Renee has lived throughout the United States but spent most of her time in Colorado, where she met her husband, Rick.

She and her husband currently attend the Camarillo Church of the Nazarene where Rick is the Associate Pastor.

Rick and Renee have one daughter, a four year old bundle of energy named Lauren. When not in the office, Renee stays very busy doing what she loves most, being a wife and mom.

Being a pastor’s wife, she is extremely involved at her church, singing in the praise team, and choir, acting on the drama team and serving on the missions council. Feel free to drop by the church office or give Renee a call. Please, get to know our new secretary, as she plans on becoming a permanent fixture at St. Matthew’s.

Office Hours are 9:00a—2:00p  
Monday through Friday

Our pastor, The Rev. Dr. Bradley Resare is available for general or confidential appointments by calling (805) 498-6910 or e-mail: RevResare@adelphia.net

If you would like the daily e-mail quote & comment: “A Thought for Today From Rev. Brad” please e-mail your request to RevResare@adelphia.net

## St. Matthew's Vision Our Future Team Introduces New Ministry Plan for 2007

In 2006, the California Pacific Annual Conference of the United Methodist Church introduced a new program to help churches in Southern California and the Pacific Islands revitalize. It involves three main components. First, a Congregational Assessment is completed by a "Vision Our Future Team," consisting of key lay persons in the church. Second, the pastor does an individual assessment of skills, abilities, and growth areas. And finally, the Staff-Parish Relations Committee decides if the pastor is a good fit for the plan and if so, makes a covenant with the pastor to maximize the success of the pastoral leadership and growth of the church for the following year. St. Matthew's has completed all three components and has made a covenant with Rev. Brad to work on developing an even more vital church.

As part of this process, St. Matthew's has completed its required Congregational Assessment for 2006-2007, which is shared here. The Cal-Pac Conference Vision Statement is to *build bridges and draw strength from one another, to nurture fruitful and prophetic leadership, and to plant new ministries*. We are participating in this vision in the following ways.

We will be developing 8 new small groups to "build bridges and draw strength from one another?" If we achieve this goal, then about 1/2 of the congregation will be involved in a small group experience meeting at least every two weeks. A small group differs from a Bible Study in that it is designed to help participants wrestle with life's issues, in a safe friendly place with encouragement but not judgement. St. Matthew's will continue to nurture fruitful and prophetic leadership through Bible studies, and through a new set of Core Classes that teach active and growing discipleship as a basic expectation of continuing church membership.

It is the desire of St. Matthew's to plant new ministries and bring forth new life within our congregation and community through developing *Come and See Worship experiences*, where we are encouraged to

invite our neighbors and friends to share special worship with them.

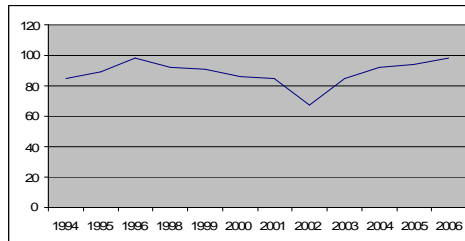
This could include music and drama events like the Christmas Choir Cantata and the Children's Christmas program we just enjoyed.

St. Matthew's will continue to grow its multi-generational ministries through worship experiences. We will seek to expand these ministries by addressing the needs of children, youth, and young adults through our Youth Group, and Men's and Women's breakfast groups.

St. Matthew's has a very active Servant Ministry Team that works constantly to reach beyond your congregation, sharing the love and compassion of God.

As a result of our assessment and planning process, we discovered some rather specific congregational strengths and we intend to make commitments to maintain them. We realized that we truly have nurturing, uplifting and strengthening worship services. We intend to continue to focus on purpose centered worship, meaning that we want to avoid the temptation to focus on preference driven decisions

### Worship Attendance



regarding worship design. It is our desire to increase use of thematic worship experiences. We want to make worship decisions based on relevance to, and meeting the needs of, seekers and new visitors. We will be considering the Come & See paradigm for worship that is found in our "Deepening Your Effectiveness" book. (Glover & Lavy, p. 119) But we are also concerned that when we make some of these changes, that we maintain a high level of congregational



care for existing members. We want the people to know the depth of our love for one-another as brothers and sisters in Christ.

To this end we will increasingly rely on small groups to continue that tradition of hospitality that

our church is known for.

As we completed the assessment and planning process, we also found some congregational weaknesses and are planning to address them in the following ways. We found a need to develop a greater commitment to adult Christian education and Spiritual development. To meet this need, we set three specific goals to be completed over the next two years. As previously stated, we intend to establish 8 ongoing small groups, meeting at least twice monthly engaged in fellowship, accountable discipleship, and mission/ministry together. (50% of members involved in 2007) We also want to establish over the next three years, a standard discipleship course of study for all members and leaders within the congregation. A 100, 200, and 300 level course with 50% of the total membership involved by year end 2007. In order for the whole church to really take this seriously, we believe it necessary to engage 100% of the church leadership in the process of personal spiritual development by participating in these courses by the end of 2009. No one is too old to grow in their faith. No one is too old to learn. None of us has it "all figured out." The Vision Our Future Team also felt that we had not done an adequate job engaging new members in the ministry of the church...helping them find a place to "fit-in." So we are implementing a new program for new and existing members, that includes a personal spiritual gifts inventory for everyone. To connect personal gifts and talents of individuals with the ministry of the church we will establish a team of ministry mentors to match gifts with existing ministries in the church. To assist us with these initiatives, we have a pastoral intern, Pastor Nai, who is focusing on the areas of developing small groups and establishing the class curriculum with our senior pastor, Rev. Brad.

Office Hours are 9:00a—2:00p  
Monday through Friday

Our pastor, The Rev. Dr. Bradley Resare is available for general or confidential appointments by calling (805) 498-6910 or e-mail: RevResare@adelphia.net

If you would like the daily e-mail quote & comment: "A Thought for Today From Rev. Brad" please e-mail your request to RevResare@adelphia.net



# Good News Pastor's Page

www.NewburyParkChurch.com

January, 2007

Updates and Ideas: Rev. Dr. Bradley Resare, 498-6910, RevResare@adelphia.net

Dear Friends,

As I reflect on this past year with thanksgiving, and as I look forward to 2007, I am in prayer for our St. Matthew's congregation. I look to 2007 with great expectations. My heart has taken me to the story of Nehemiah. The time was approximately 423 B.C. in the land of Persia which is present-day Iran. Living in exile from his beloved homeland Israel, he heard of the great distress of the people in Judah who had survived the captivity and he listened with tears on his face of the devastation in Jerusalem.

Nehemiah fasted, prayed, and then asked King Artaxerxes if he could return to Jerusalem to rebuild it. God gave him favor as the king granted him passage and also gave him rights to take timber from the king's forests. After he returned and reviewed the war damaged walls of Jerusalem, he spoke to all the people amidst much opposition.

*"Come and let us build the wall of Jerusalem, that we may no longer be a reproach." And I told them of the hand of my God which had been good upon me, and also of the king's words that he had spoken to me. So they said, 'Let us rise up and build.' Then they set their hands to this good work. But when Sanballat the Horonite, Tobiah the Ammonite official, and Geshem the Arab heard of it, they laughed at us and despised us, and said, 'What is this thing that you are doing? Will you rebel against the king?' So I answered them, and said to them, 'The God of heaven Himself will prosper us; therefore we His servants will arise and build, but you have no heritage or right or memorial in Jerusalem'" (Nehemiah 2:17-20).*

The key points to this scripture that speak to me are:

- LET US RISE UP AND BUILD
- THEY SET THEIR HANDS TO THIS GOOD WORK
- THE GOD OF HEAVEN HIMSELF WILL PROSPER US

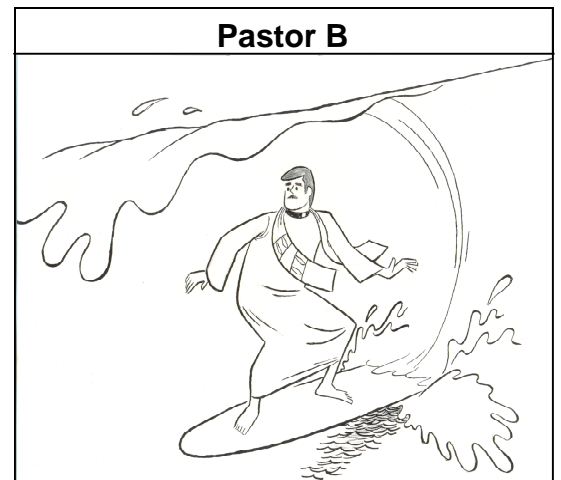
These are also keys to our own success in life and in the leadership of the church. First, we must arise out of complacency and fear to do what God has assigned us to do. It is for God's glory. It is to help people. It will make a difference in the earth. We cannot sit and wait for others to act or for all the conditions to be perfect. We must arise and build God's Kingdom. This is our calling. Secondly, we must set our hands to this good work. It takes effort, diligence, time, focus, and prayer. To do God's Kingdom work requires all that we are. It is great to start but it's vital to finish. We cannot be moved by opinions of others, world conditions, or the struggle. Somehow we must find a way to complete the task. Thirdly, our trust is in God's support. He has committed to meet all our needs according to His riches in glory by Christ Jesus (Philippians 4:19). The God of heaven Himself, He will prosper us. We know God is the One who inspired the vision and therefore He will provide the provision.

The wall of Jerusalem was rebuilt in 52 days. It was a miracle. God made a way because a group of people worked together as a team to achieve a great work. They prayed and worked at the same time.

We are also looking for a miracle right here in Newbury Park. We intend to share the Good News of God with the people of our community, and to grow ourselves through the process. And Yes! Your help is needed. Your part on this team of people is important. Everyone is called to something as part of the Body of Christ at St. Matthew's... No one is called to nothing. I pray that every time commitment, every financial commitment, and every prayer that you sow, will be multiplied back to you in the way you need it the most. Together, we will be the Church!

In Jesus,

Rev. Dr. Bradley P. Resare





# St. Matthew's United Methodist Church

1360 S. WENDY DRIVE, NEWBURY PARK, CA 91320 (805) 498-6910

*Return Service Requested*

Pastor: Rev. Dr. Bradley Resare

Sunday Worship: 8:00 am-*Informal Service*

9:30 am-*Nursery Opens*

10:00 am-*Traditional Service with Choir and Child Care*

10:00 am-*Sunday School - Children and Youth*

*Church Office Hours: 9 am-2 pm, Monday-Friday*

Non-Profit Org.  
U.S. Postage  
**PAID**  
Thousand Oaks, CA  
Permit No. 311

## St. Matthew's **Good News** January 2007



### St. Matthew's in Ministry

Rev. Dr. Bradley Resare:	Senior Pastor	Joanne Stone:	Treasurer
Pastor Sione Nai	Pastoral Intern	Delia Kellogg:	Financial Secretary
All the People of St. Matthew's:	Ministers	Barbara Crowdis:	Membership Secretary
Rev. Dr. Mary Ann Swenson:	Resident Bishop	Ben Kuo, Chair:	Children's Center Board
Rev. Ms. Catie Coots:	District Superintendent		<b>BRING GROUP</b>
Renee James:	Administrative Assistant	P.J. Resare, Team Leader:	Radical Hospitality
Holly Halweg:	Choir Director	TBS, Team Leader:	Membership Growth
Betty Nicholson:	Accompanist		<b>GROW GROUP</b>
Narima Latif:	Children's Center Director	Rev. Joe and Dorothy Lewolt:	Membership Care
Shana Gries:	Youth Director	Pam Pond, Team Leader:	Education & Youth Team
Lyric MacKinney:	Nursery Director	Lynne Hartley, Team Leader:	Discipleship Ministry Team
Linda Norberg, Chair:	Administrative Council	Ella Fletcher, Team Leader:	Worship Staff Team
Tina Martin:	Lay Member to Annual Conference	Jim Cerone, Team Leader:	Worship Design Team
Barbara Crowdis:	Lay Leader		<b>SERVE GROUP</b>
Rev. Brad Resare, Chair:	Lay Leadership Committee	Rod & Barbara Womer, Team Leaders:	Servant Ministry Team
Linda Norberg, Chair:	Staff Parish Relations Committee	P.J. Resare, Team Leader:	Social Action Team
Cheri Bauer, Chair:	Stewardship Committee	Carla Von Zell	Wedding Planner
Elected at January Meeting, Chair:	Board of Trustees		
Bob Biery, Chair:	Finance Committee		

**St. Matthew's Mission: is to BRING spiritual wanderers into relationship with Jesus Christ, to GROW in discipleship through small group community and to SERVE out of our calling and giftedness.**



# Good News January 2007

St. Matthew's United Methodist Church

Sun	Mon	Tue	Wed	Thu	Fri	Sat
	<b>1</b> <b>CHILDREN'S CENTER CLOSED</b>  <b>CHURCH OFFICE CLOSED</b>	<b>2</b> <b>CHILDREN'S CENTER CLOSED</b>  7:30p - Boy Scouts	<b>3</b> 11:30a Children's Chapel (SA) 4:30p Children's Chapel (SA)	<b>4</b> <b>NO MUSIC PRACTICES</b>	<b>5</b> <b>Pastor's Day Off</b> 7:00p—Yoga (SA)	<b>6 EPIPHANY</b> 8:00a - Men's Breakfast 2:00p - Chinese Art Class 7:00p-Choir Party (Tina Martin's)
	<b>7 LEADERS WORSHIP (SA)</b> <b>8:00 &amp; 10:00</b> <b>2:30-5:00p Leadership Summit (SA)</b> <b>5:00p-Leader's Commissioning (SA)</b> <small>DONATIONS FOR FOOD BANK</small>	<b>8</b> 6:15p - Yoga (SA) 7:15p- Board of Trustees (FR) 7:30p- BSA (SA) 8:15p- Stewardship Committee (FR)	<b>9</b> 7:00p- Servant Ministry (WR) 7:00p- Worship Staff Team (FR) 7:30p- BSA (SA) 8:15p- Admin. Council (FR)	<b>10</b> 11:30a Children's Chapel (SA) 4:30p Children's Chapel (SA) 5-9p- <b>Sharky's</b> Fundraiser <b>Dinner</b> 6:30p James Moore Book Study (TBA) 7:15p- <i>Pastor's Bible Study (FR)</i>	<b>11</b> <b>Music Practices (SA)</b> 6:30p-ChimeChoir 7:30p-Adult Choir 9:00p- Praise Band	<b>12</b> <b>Pastor's Day Off</b> 7:00p—Yoga (SA)
<b>14</b> <b>8:00 &amp; 10:00 Worship (SA)</b> 9:30a- Children's Choir (WR) 10:00a- Sunday School (classroom) 11:45a- <i>Pastor's Bible Study (FR)</i> 5:00p UMYF (YR)	<b>15</b> <i>Rev. Martin Luther King, Jr. Birthday</i>  <b>CHURCH OFFICE CLOSED</b>  6:15p - Yoga (SA)	<b>16</b> 7:00p- Children's Center Board (WR) 7:30p- BSA (SA)	<b>17</b> 11:30a Children's Chapel (SA) 4:30p Children's Chapel (SA) 6:30p James Moore Book Study (TBA) 7:15p- <i>Pastor's Bible Study (FR)</i>	<b>18</b> <b>Music Practices (SA)</b> 6:30p-ChimeChoir 7:30p-Adult Choir 9:00p- Praise Band	<b>19</b> <b>Pastor's Day Off</b> 7:00p—Yoga (SA)	<b>20</b> 2:00p - Chinese Art Class (WR)  8a-4p- CPR & First Aid (SA)
<b>21</b> <b>8:00 &amp; 10:00 Worship (SA)</b> 9:30a- Children's Choir (WR) 10:00a- Sunday School (classroom) 11:45a- <i>Pastor's Bible Study (FR)</i> 5:00p UMYF (YR)	<b>22</b> 6:15p - Yoga (SA) 7:00p- Pack 3730 Committee (WR)	<b>23</b> 7:30p- BSA (SA)	<b>24</b> 11:30a Children's Chapel (SA) 4:30p Children's Chapel (SA) 6:30p James Moore Book Study (TBA) 7:15p- <i>Pastor's Bible Study (FR)</i>	<b>25</b> <b>Music Practices (SA)</b> 6:30p-ChimeChoir 7:30p-Adult Choir 9:00p- Praise Band	<b>26</b> <b>Pastor's Day Off</b> 7:00p—Yoga (SA) 8:00p- BSA Troop Leadership Sleepover (SA)	<b>27</b> 2:00p - Chinese Art Class (WR)
<b>28</b> <b>8:00 &amp; 10:00 Worship (SA)</b> 9:30a- Children's Choir (WR) 10:00a- Sunday School (classroom) 11:45a- <i>Pastor's Bible Study (FR)</i> 5:00p UMYF (YR)	<b>29</b> 6:15p - Yoga (SA) 7:00p- Cub Pack 3730 (SA) 7:30p- BSA (WR)	<b>30</b> 7:30p- BSA (SA)	<b>31</b> 11:30a Children's Chapel (SA) 4:30p Children's Chapel (SA) 6:30p James Moore Book Study (TBA) 7:15p- <i>Pastor's Bible Study (FR)</i>	<b>1</b> <b>Music Practices (SA)</b> 6:30p-ChimeChoir 7:30p-Adult Choir 9:00p- Praise Band	<b>2</b> <b>Pastor's Day Off</b> 7:00p—Yoga (SA)	<b>3</b> 8:00a - Men's Breakfast 2:00p - Chinese Art Class (WR)



(FR) Fireside Room (PS) Pastor's Study (YR) Youth Room (WR) Wesley Room (SA) Sanctuary (TBA) to be assigned

# St. Matthew's United Methodist Church — 2007 Budget

## GENERAL BUDGET INCOME

Acct#	INCOME	
1	Pledges	162,000
2	Envelopes	25,000
3	Plate Collection	3,500
4	Church School Offering / Heifer	300
5	Seasonal Gifts	3,000
6	VBS	300
7	Weddings and Funerals	1,200
9	Special Giving Opportunities	9,800
10	Children's Center Income	13,000
13	Chinese Culture Class	1,800
25	Fundraising Income	29,820
17	Mission Scholarship	1,000
18	Camperships	600
19	Upper Room	300
<b>TOTAL INCOME</b>		<b>251,620</b>

## CAPITAL PROJECTS

8	CAPITAL CAMPAIGN INCOME	47,500
<b>MAJOR PROJECTS</b>		
250	Paint Sanctuary	9,000
256	Landscaping & Irrigation System	14,500
258	Parsonage Sidewalk & Driveway	3,500
262	Parking Lot Repair	12,500
263	Termite Eradication	8,000
250	<b>TOTAL MAJOR PROJECTS</b>	<b>47,500</b>

**BRING** Spiritual wanderers into relationship with Jesus Christ  
**GROW** in discipleship through small group community  
**SERVE** through our calling and giftedness

## SPECIAL GIVING LIST

Background Checks for Staff  
 Background Checks for Volunteers  
 Barbeques and Special Functions  
 Coffee Fellowship  
 Bible Studies in Small Groups  
 Seasonal Studies (Advent & Lent)  
 Children's Bibles  
 Adult Bibles  
 Money for Children & Youth to go to Church Camp  
 Money for Youth to go on Mission

## GENERAL BUDGET EXPENSES

100	<b>STAFF-PARISH RELATIONS</b>		350	<b>FINANCE COMMITTEE</b>		620	<b>MUSIC</b>		
101	Pastor Salary	32,850	351	Software	350	634	Instrument Maintenance	225	
102	Pastor Utility	4,000	352	Finance Supplies	300	635	Sheet Music	1,300	
103	Housing Allowance	3,000	350	<b>TOTAL FINANCE</b>	<b>650</b>	636	CCLI ( Music License)	200	
104	Health Insurance	10,008	400	<b>STEWARDSHIP COMMITTEE</b>		630	Instrument /sound Equipment	200	
105	Pension Plan	2,622	401	Food	600	631	Guest Artists	600	
106	Personal Investment Plan	1,065	402	General Programming	200	632	Music Staff Continuing Educ.	150	
107	CPP (Disability)	1,525	403	Honorariums	500	633	Miscellaneous	400	
123	CRSP-DC	1,525	404	Program Material	100	620	<b>TOTAL MUSIC</b>	<b>3,075</b>	
108	Secretary	18,000	405	Seed Money for Fundraising	100	650	<b>EDUCATION</b>		
109	Choir Director	11,000	400	<b>TOTAL STEWARDSHIP</b>	<b>1,500</b>	651	Children's Bible (SG)	300	
110	Accompanist	9,000	450	<b>ADMINISTRATION</b>		652	Toddler's Curriculum	230	
111	Youth Director	9,000	451	Office Supplies	5,500	653	Preschool / K Curriculum	210	
112	Nursery Director	3,100	452	Postage	3,000	654	Younger Elem. Curriculum	210	
115	Pastor's Expense (Reimb.)	3,500	453	Copy Equipment Cost	6,000	655	Older Elementary Curriculum	210	
116	Annual Conf. (Reimb.)	400	450	<b>TOTAL ADMINISTRATION</b>	<b>14,500</b>	656	Media - All Ages	200	
117	Continuing Education	600	500	<b>BRING GROUP</b>		657	Supplies	200	
118	Social Security Tax	6,220	510	<b>MEMBERSHIP GROWTH</b>		658	Teachers Recognition	250	
119	Workers Comp. Insurance	2,100	516	Special Functions (SG)	3,000	664	Teacher's Education	200	
120	Staff Appreciation	250	511	New Member Luncheons	100	659	Vacation Bible School	300	
121	Safe Sanctuary (SG)	200	512	New Member Packets	300	660	Youth Curriculum	400	
100	<b>TOTAL SPRC</b>	<b>119,965</b>	513	First Time Visitor Packets	500	662	Youth Supplies	200	
150	<b>CONNECTIONAL GIVING</b>		514	Name Tags	600	663	Confirmation Class	200	
151	Administrative Fund	3,949	515	Publicity	8,000	665	Graduation Awards	150	
152	Africa University Fund	97	510	<b>TOTAL MEMB.GROWTH</b>	<b>12,500</b>	667	Adult Bibles (SG)	300	
153	Quotas and Specials	367	550	<b>HOSPITALITY</b>		670	Adult Curriculum	300	
154	Black College Fund	430	551	Coffee Fellowship (SG)	600	669	Media Fee	80	
155	Ministerial Education Fund	1,076	550	<b>TOTAL HOSPITALITY</b>	<b>600</b>	650	<b>TOTAL EDUCATION</b>	<b>3,940</b>	
156	Ministerial Support	9,117	600	<b>GROW GROUP</b>		680	<b>YOUTH</b>		
157	World Service Benevolence	9,513	610	<b>WORSHIP</b>		681	Youth Director Education	300	
150	<b>TOTAL APPORTIONMENT</b>	<b>27,000</b>	611	Communion	300	682	Programming	300	
200	<b>BOARD OF TRUSTEES</b>		612	Guest Preachers	400	683	Food	400	
201	Church Utility	18,000	613	Worship Supplies	400	685	Supplies	200	
202	Custodian	3,000	614	Upper Room Daily Devotionals	260	686	Church Camperships (SG)	600	
203	Insurance and Fees	5,500	615	Candles & Décor	300	687	Boy Scout Camperships	500	
204	Landscape Maint.	7,500	616	Audio Tapes	100	680	<b>TOTAL YOUTH</b>	<b>2,300</b>	
205	Maintenance and Supply	7,500	618	CVLI (Video License)	180		<b>SERVE GROUP</b>		
206	Office Equipment Maint.	500	619	Video Supplies	500	810	<b>SERVANT MINISTRY TEAM</b>		
207	Property Taxes & Assessments	1,600	610	<b>TOTAL WORSHIP</b>	<b>2,440</b>	811	Homeless Program	300	
208	Parsonage - Maintenance Fund	1,000	700	<b>DISCIPLESHIP</b>		812	Mission Scholarships (SG)	1,000	
209	Parsonage Landscape Maint.	1,000	710	Study (SG)	2,000	814	Sunday School Heifer Project	300	
210	Major Maintenance Fund	5,000	711	Membership Studies	2,000	815	LSS Shelter Coordinator	2,400	
211	Safe Sanctuary (SG)	1,000	712	Seasonal Studies (SG)	800	920	LSS Job Training Program	2,750	
200	<b>TOTAL TRUSTEES</b>	<b>51,600</b>	700	<b>TOTAL DISCIPLESHIP</b>	<b>4,800</b>	810	<b>TOTAL SERVANT MINISTRY</b>	<b>6,750</b>	
								<b>TOTAL EXPENSES</b>	<b>251,620</b>